



GTHD High Performance Servo Drive

Specifications

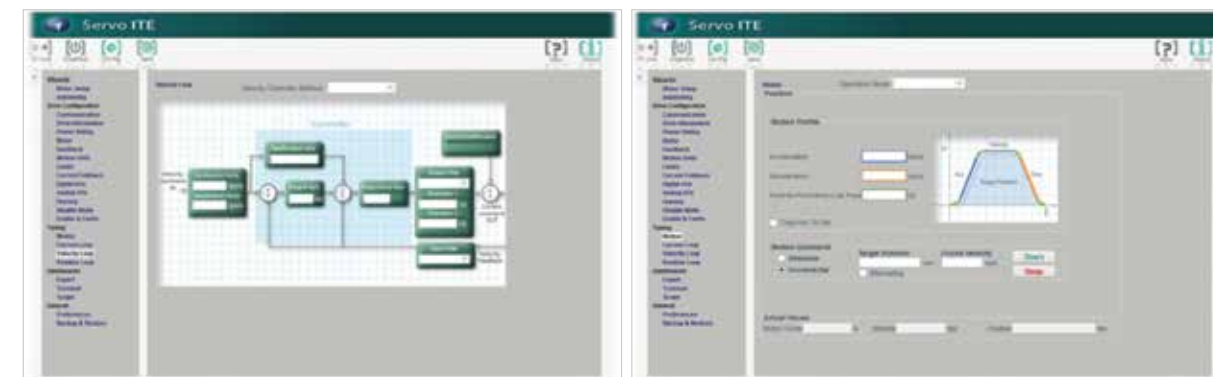
Function	Description
Supported motor	Rotary/Linear / DDR / Brush or brushless
Encoder and protocol	Incremental encoder/ Absolute Encoder/ Resolver/ Sin wave encoder /Cos wave encoder/EnDAT2.1&EnDAT 2.2
Control mode	Position / Velocity / Current
Pulse signal	Pulse + Direction/± Pulse
Maximum output frequency	50 kHz
Speed range	0~6000 rpm
Speed control accuracy	<± 0.2%
Speed fluctuation	<± 0.3%
Positioning accuracy	<± 1pulse
Current loop bandwidth	3000 Hz
Velocity loop bandwidth	600 Hz
Position loop bandwidth	100 HZ
Digital IO	11 Input / 6 Output
Analog IO	2 Input / 1 Output
Operating Temperature	-10~45°C
Humidity	5%~95%
Communication bus supported	gLink/RS232/USB/CanOpen/EtherCat/ProfiNet

Dimension

Model	Rating Voltage (VAC)	Dimension W x H x D (mm)
GTGD-003	120/240	43 x 173 x 143
GTGD-006	120/240	55 x 173 x 167
GTGD-013	120/240	62 x 194 x 182
GTGD-024	120/240	116 x 245 x 194
GTGD-003>GD-006	400/480	110 x 172 x 193
GTGD-012-4DAP1	400/480	117 x 245 x 194

ServoITE

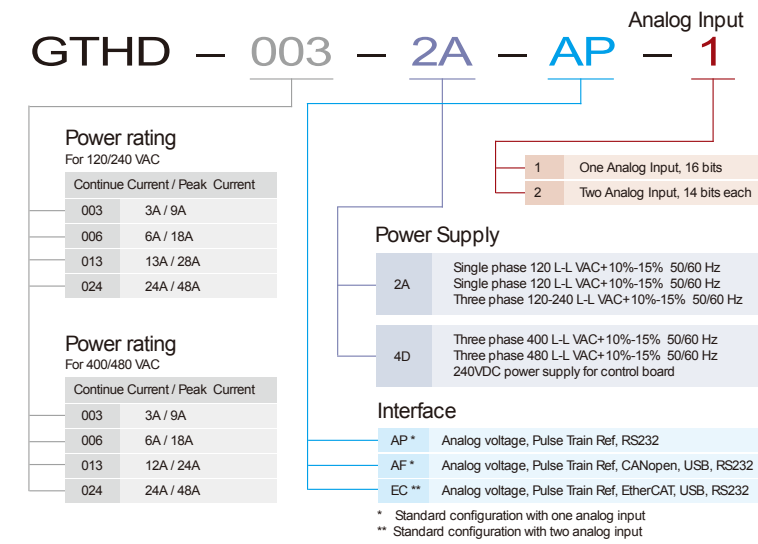
ServoITE is a graphic user interface (GUI) provided with the GTGD to enable set up, configuration and tuning of the drive. It allows you to program the drive parameters specifically for the motor to which the GTGD is connected, and for the particular operation that the drive will be performing in the machine.



Page for editing the parameters of velocity loop

Page for editing the motion's acceleration, deceleration and position

Selection Guide



Applications



Ordering Guide

Model / Parameters	Rated Current (A)	Rated Voltage (V)	Motor Power (W)	Communication
Standard type Series (Analog model)	GTGD-003-2AAP1	3	400/750(Small inertia)	RS232
	GTGD-006-2AAP1	6	750(Mid. To Large inertia) / 1000/1300/1500	
	GTGD-013-2AAP1	13	2500/3000/3500	
	GTGD-024-2AAP1	24	4400/5500/7300	
	GTGD-003-4DAP1	3	Below 1500	
	GTGD-006-4DAP1	6	Below 3000	
	GTGD-012-4DAP1	12	Below 6300	
Analog+ CANopen	GTGD-003-2AAF1	3	400/750(Small inertia)	STD + CANopen, USB, support Hiperface
	GTGD-006-2AAF1	6	750(Mid to Large inertia) / 1000/1300/1500	
	GTGD-013-2AAF1	13	2500/3000/3500	
	GTGD-024-2AAF1	24	4400/5500/7300	
	GTGD-003-4DAF1	3	Below 1500	
	GTGD-006-4DAF1	6	Below 3000	
	GTGD-012-4DAF1	12	Below 6300	
Analog + EtherCAT	GTGD-003-2AEC2	3	400/750(Small inertia)	STD+EtherCAT, USB, support Hiperface
	GTGD-006-2AEC2	6	750(Mid to Large inertia) / 1000/1300/1500	
	GTGD-013-2AEC2	13	2500/3000/3500	
	GTGD-024-2AEC2	24	4400/5500/7300	